

Wm Burwells claim in Sec. 36. T. 7. N. - R. 2. W. Dec. 22

	+	-	+	-	+	-	+	-	+	-
N88°40'E	1302.5	30.2	1302.1	30.2	1302.1	1302.1	1302.1	1302.1	1302.1	1302.1
S18°28'E	365.6		346.8	115.8		346.8	115.8	2720.0		
West.	892.9			892.9		892.9	1942.9			
S27°50'W	627.0		554.4	292.7		554.4	292.7	757.3		
West	230.0			230.0		230.0	230.0			
N0°09'W	871.0	871.0		2.3	871.0		2.3		2.3	
	901.2	901.2	1417.9	1417.9						15.17 a.

John Growberg, claim in Sec. 36. T. 7. N. - R. 2. W. - Begs. 871. Ft. S. 0°00' and 230. Ft. E. of N.W. cor. Sec. 36. 4 runs N 27°50' E 627. Ft. 9c.

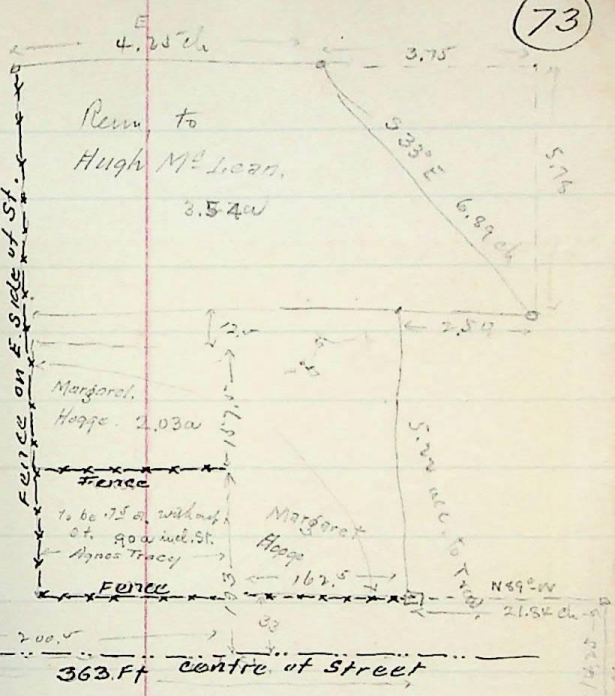
N27°50'E	627.0	554.4	292.7							
E.	892.9		892.9							
S18°28'E	584.5	554.4	186.4							
W.	1372.0	554.4	554.4	1372.0	1372.0					14.41 a.

Willard Cragens tract in Sec. 36. T. 7. N. - R. 2. W. - Begs. 2136.3 Ft. S. 50°33'W. and 207. Ft. S. 85°04'W. From N.E. cor. Sec. 36. 4 runs S 85°04'W 294. Ft. 9c.

N85°04'E	294.4	253.2	2933.5							
S5°57'W	1648.4		644.9	67.1						
S85°25'W	2672.8		218.8	2664.2						
N18°28'W	638.4	605.5		202.2						
	858.7	858.7	2933.5	2933.5						40.48 a.

Wm F. Mc Intire in Sec. 36. T. 7. N. - R. 2. W.

	+	-	+	-	+	-	+	-	+	-
E.	66.3		66.3							
S0°28'W	168.0		168.0	1.3						
S0°39'E	1334.3		1334.1	15.1						
N70°27'W	81.7			76.4						
N0°09'W	1475.0			3.8						
	1502.7	1502.1	81.4	81.5						2.36 a.
S86°23'E	66.4		4.2	66.3						
S0°28'W	168.0		168.0	1.3						
S0°39'E	1329.9		1329.7	15.0						
N70°27'W	80.5			75.8						
N0°09'W	1475.0			3.8						
	1501.9	1501.9	81.3	80.9						



March 5-1904 - Copy descriptions by self to also
 To Margaret Hogge - Pt. N.E. 1/4 Sec. 17. T. 6. N. - R. 2. W.
 Beg. 14.25 chs N. + 21.54 chs N89°W. from S.E. cor. ad 1/4 Sec. N. 17. T. 6. N. - R. 2. W.
 West 2.42 chs. N. 2.93 chs - West 3.08 chs - N. 2.50 chs.
 E. 5.50 chs - S 5.22 chs more or less to beg. 2.03 ac.

To Hugh McLean, Pt. N.E. 1/4 Sec. 17. T. 6. N. - R. 2. W. - Beg. 19.47 ch
 N. and 21.54 chs N89°W. from S.E. cor. ad 1/4 - West 5.50
 chs - N 5.18 chs - more or less to about 25.16 ch N. + 27.34
 chs N89°W. From the S.E. cor. ad 1/4 Sec. E. 4.25 chs
 S32°E 6.99 ch to a point E. of beg. - W. 2.50 chs to beg.
 3.54 ac. also Part of S.W. 1/4 of Sec. 17 and part of N.W. 1/4
 Sec. 20, of said Tp. and Range. Beg. 3.47 chs N.
 of the S.W. cor. ad Sec. 17. - Running thence S89°23'E
 15.00 chs - S 10.00 chs N89°23'W. 15.00 chs. N10. chs
 to beg. containing 15. acres In all 15.54 acres, more or less.

To Agnes Tracy - Pt. N.E. 1/4 Sec. 17. T. 6. N. - R. 2. W.
 Beg. 14.25 chs N. and 21.54 chs N89°W. from S.E. cor.
 ad 1/4 Sec. - West 3.08 chs - N. 2.93 chs - E. 3.50 chs
 S. 2.93 chs - to beg. 0.90 ac. also. Part of S.W. 1/4
 Sec. 17. and part of N.W. 1/4 Sec. 20, of said Tp. and
 Range. Beg. 3.47 chs N. and 15.00 chs S89°23'E
 from the S.W. cor. of said Sec. 17 - Running thence S89°23'E
 5. chs - S 10.00 chs - N89°23'W. 5. chs - N10. chs to beg.
 cont. 5. a. In all 5.90 acres more or less.